

**Configuring IRDA wireless communications between laptop and EPM6000**

Setup Data: Lab test at NTSI – 72 Hour online data variance measurement 061311- Communications stability- Graphs not shown in this document – See analysis Section part 2a.

Operating System- Windows XP Services Pack 3 (Windows 7 Professional Tests Failed)

Laptop must have an IRDA port or IRDA PCMCIA card / Adapter – This test included a laptop with a built in IRDA Port.

GE Communicator Software Rev 3.0.98 (Not compatible with windows 7 Professional)

EPM 6000 #PL600065AO

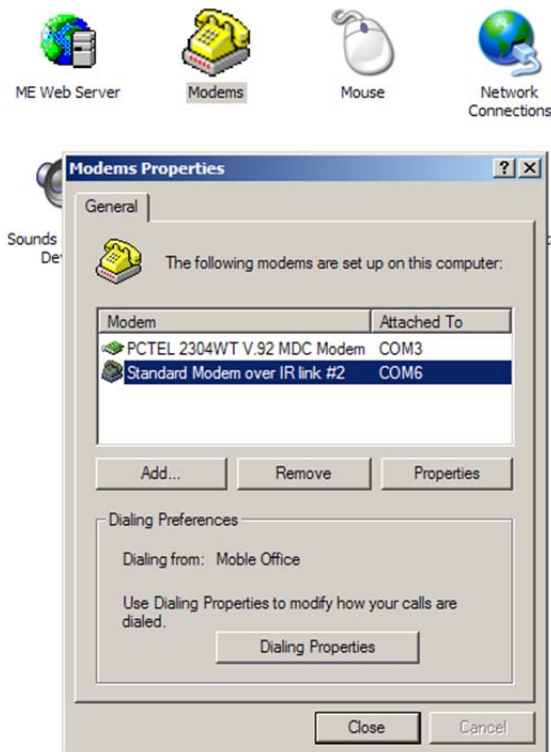
Communications Settings from the front panel:

Node 1

Modbus RTU

Baud Rate 9600

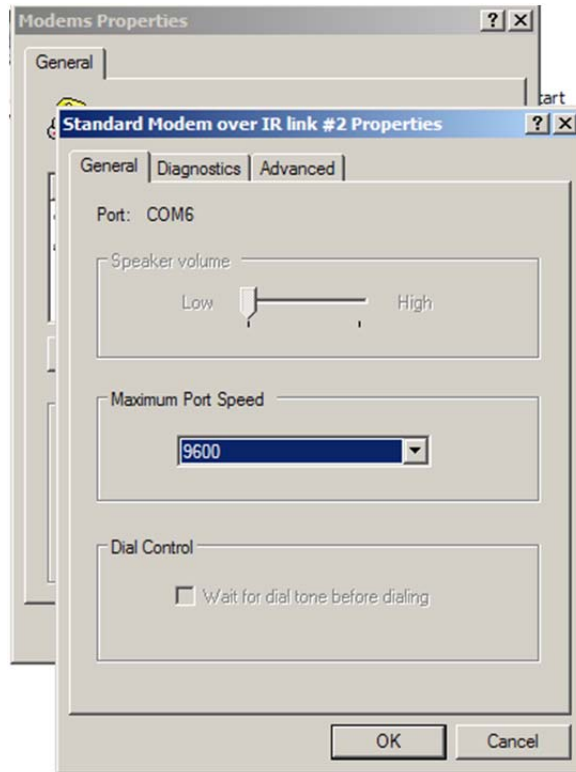
Laptop Settings – ( Line up the IRDA ports on LT and Meter - check to see if the meter is found ) If successful - Select Control Panel/ Modems – Note in this test the Com 6 device did not show up until I was in line with the meter IRDA port.



Continued:

**Configuring IRDA wireless communications between laptop and EPM6000 (Continued)**

Verify Laptop IRDA Properties – Port Speed



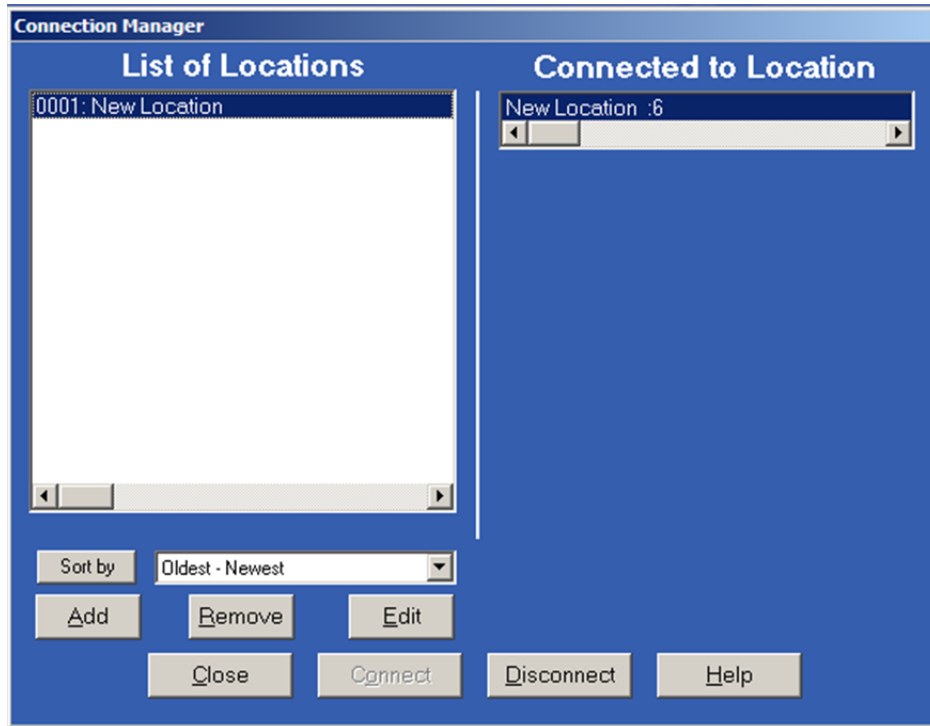
Continued:

**Configuring IRDA wireless communications between laptop and EPM6000 (Continued)**

GE Communicator Software settings – Test port configured



Select Connection Manager ICON

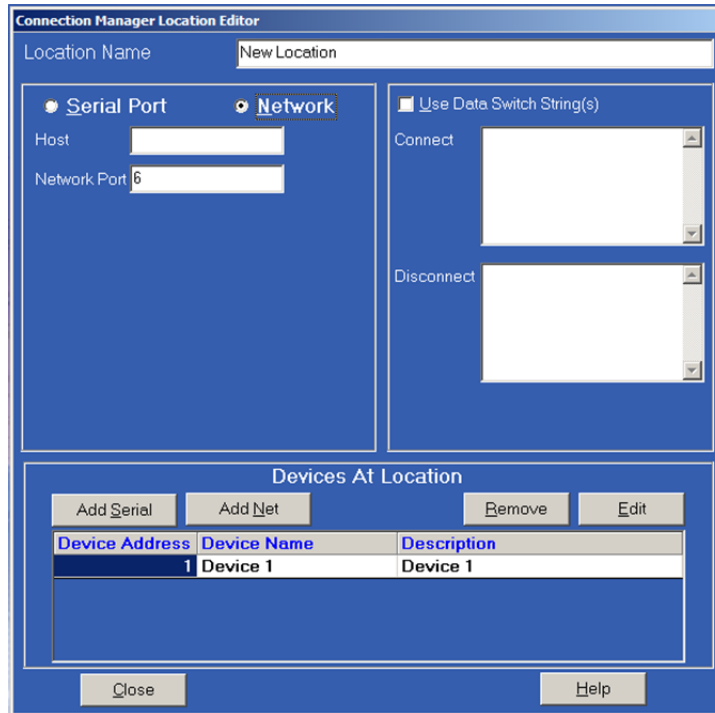


Select Add to create new or Edit to modify current

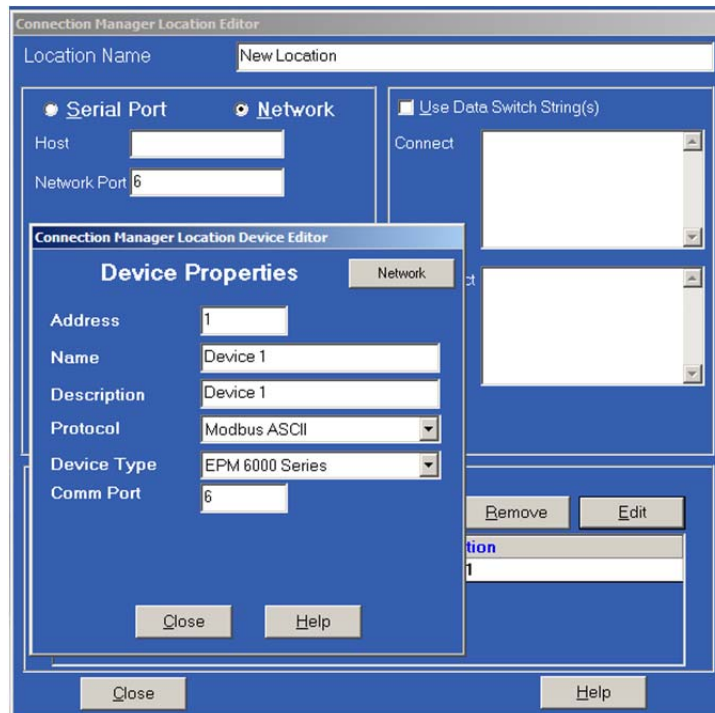
Continued:

**Configuring IRDA wireless communications between laptop and EPM6000 (Continued)**

Edit



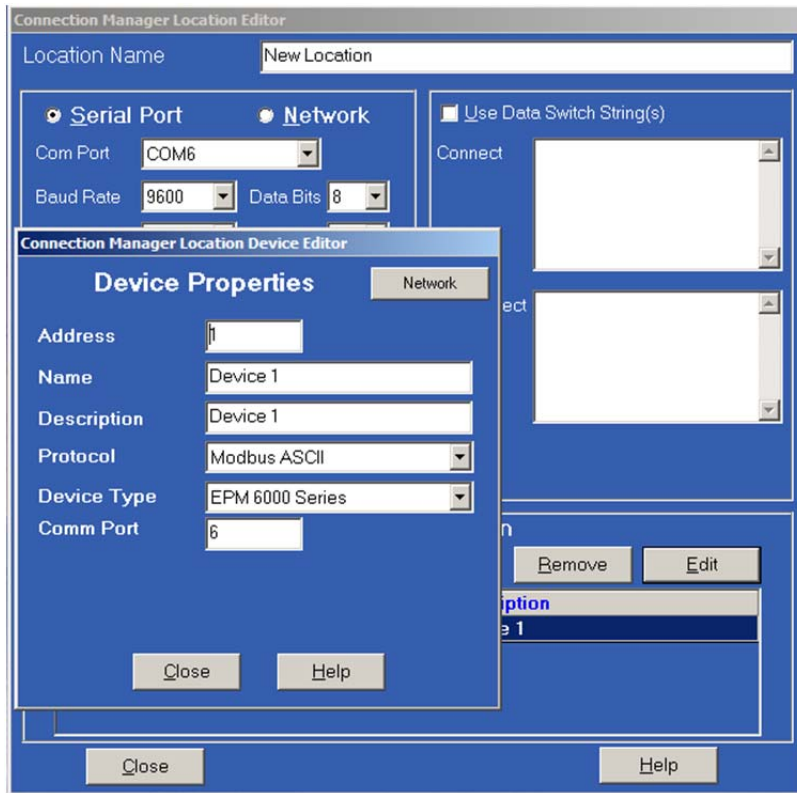
Make sure to set correct port and node numbers



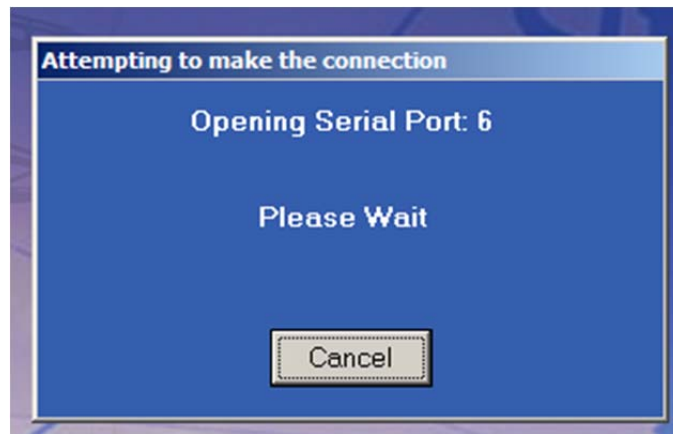
Continued:

**Configuring IRDA wireless communications between laptop and EPM6000 (Continued)**

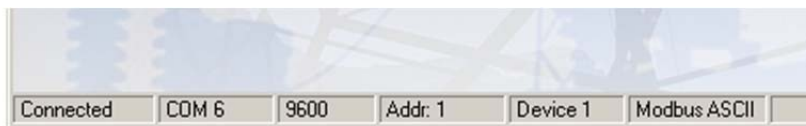
Be sure to set the serial port the same as the network comm port – Make sure that Modbus ASCII is selected in both cases.



Select Connect



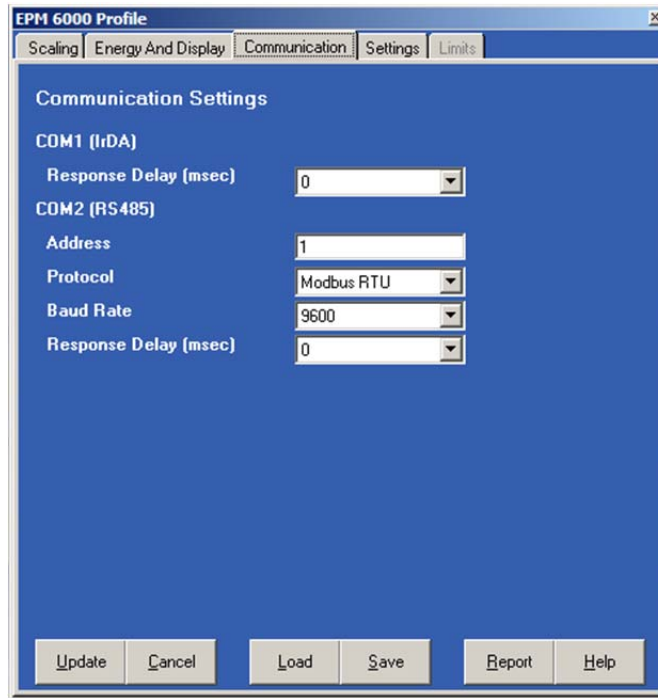
Note lower Task Bar data



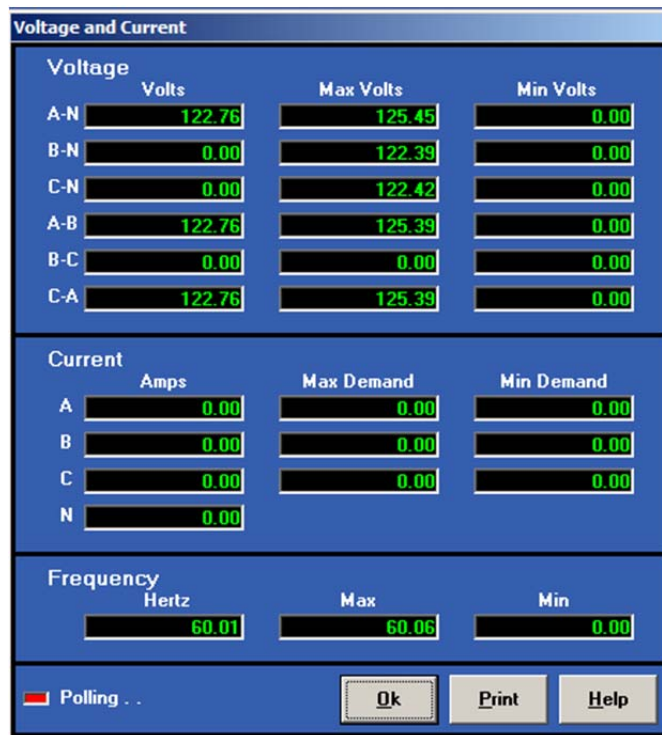
Continued:

**Configuring IRDA wireless communications between laptop and EPM6000 (Continued)**

As programmed from the meter keypad



Test Meter data



End