

Schweitzer – Connect and retrieve data procedure

Connect serial cable (Pigtail) to PCMCIA Serial Card in left side of laptop as shown below

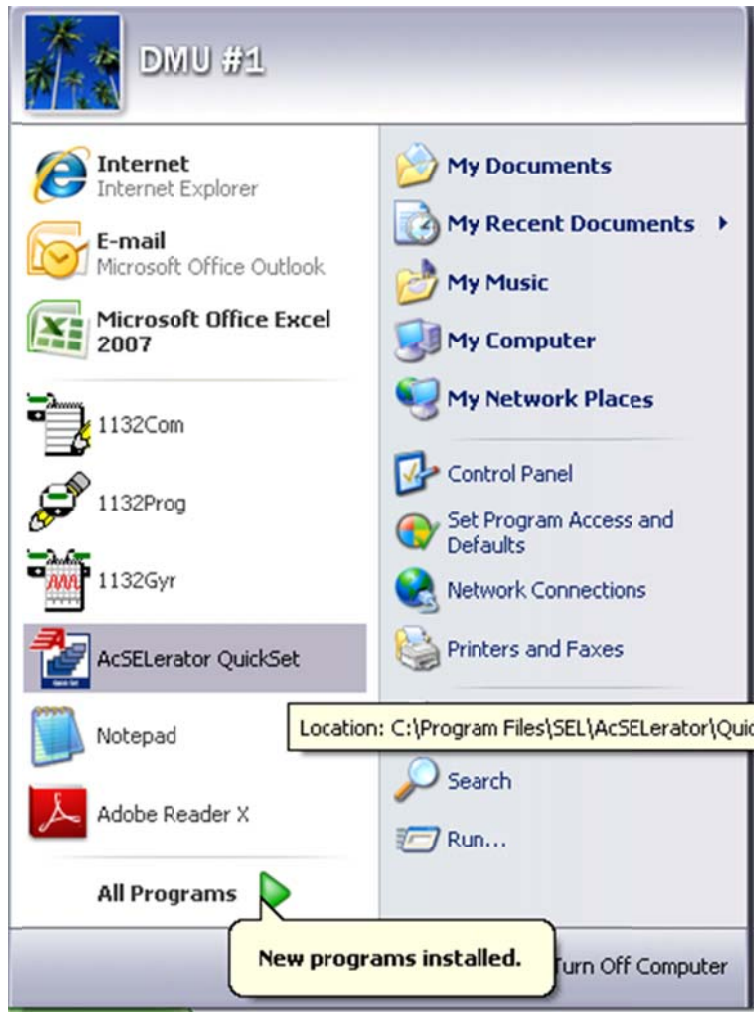


Connect other end of serial cable to front port on Schweitzer 351A

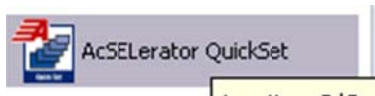


Continued:

Activate AsSElerator Software



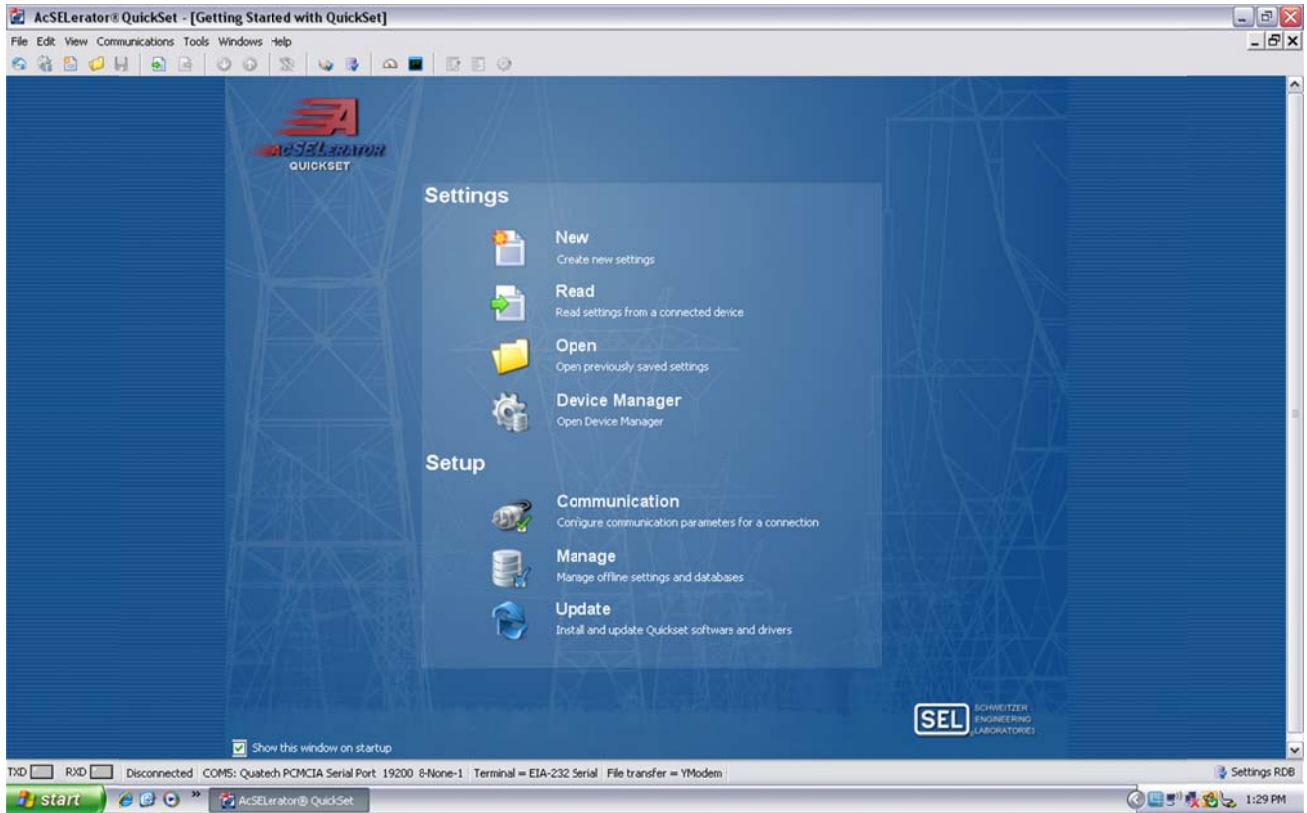
Select:



Continued:

Schweitzer – Connect and retrieve data procedure

You should then see:



Select:



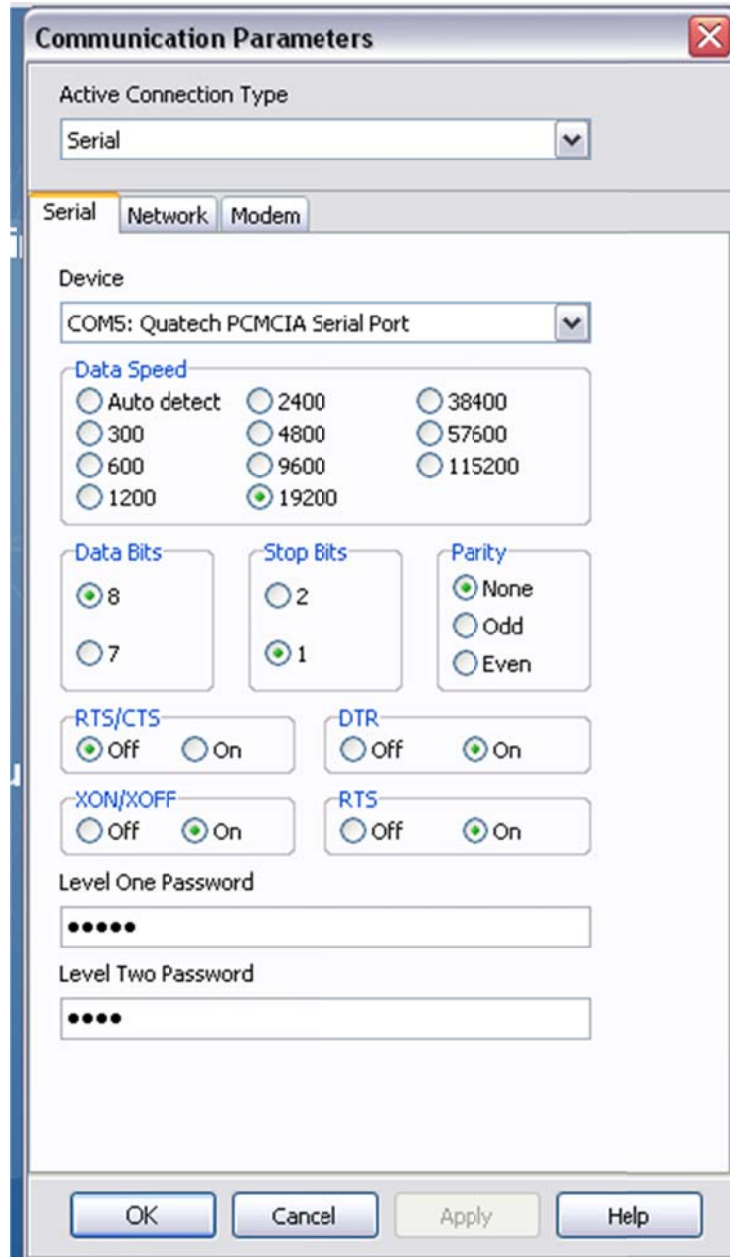
Continued:

Schweitzer – Connect and retrieve data procedure

You should then see:

In this Case the devices are set at COM 5 and 19200 Data Speed

In the event that the device wont connect try setting data speed to Auto Detect

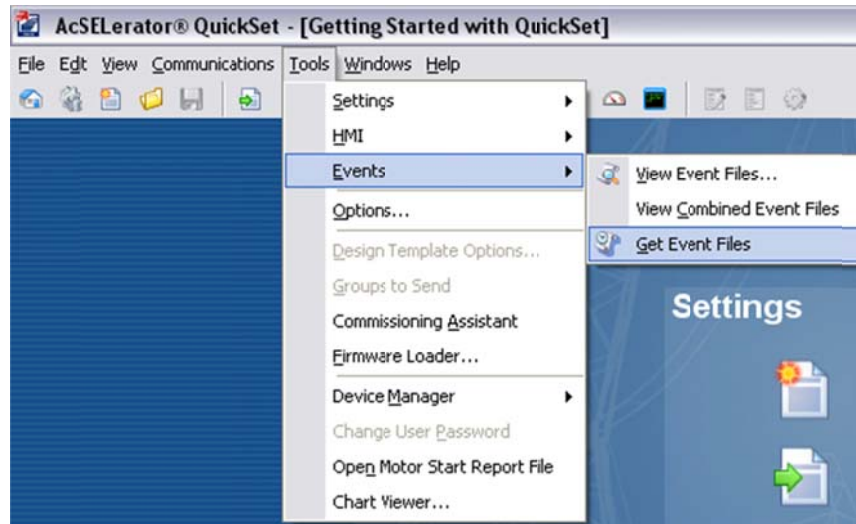


Then Select OK

Continued:

Software will show that it has connected in the lower left pane

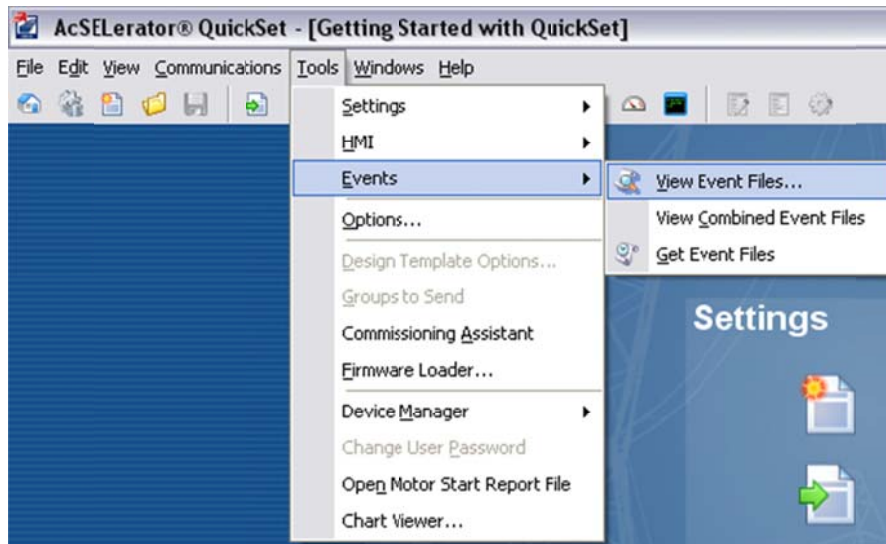
Then Select:



All events will be uploaded to the software for selection.

Select the events that you wish to get and save. Once saved select the close button on the right hand pane to return to software main menu.

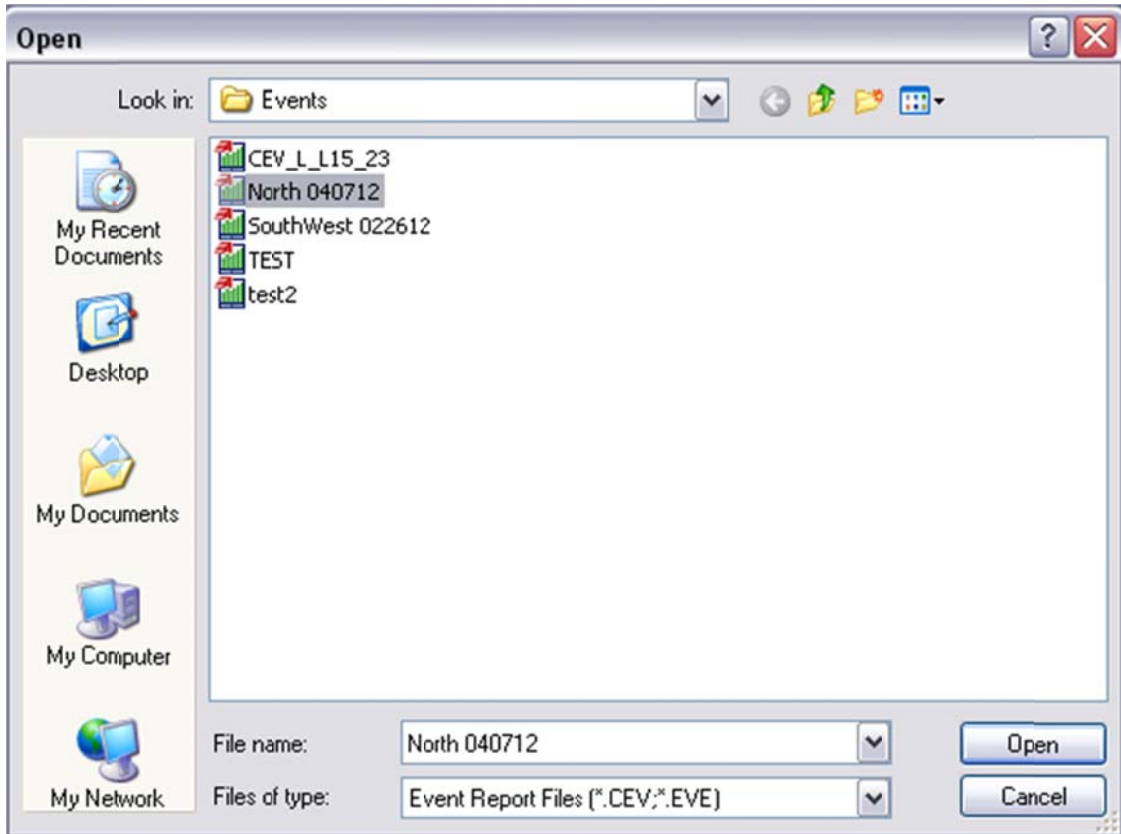
To view events files select:



Continued:

Schweitzer – Connect and retrieve data procedure

You should then see.



Select the event file that you wish to review:

Once opened the Icons on the lower right allow various data views



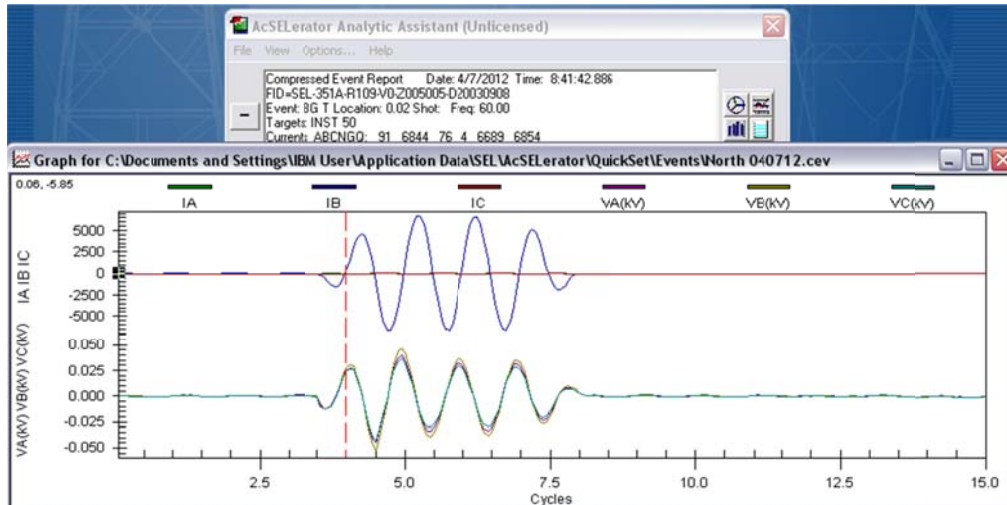
Continued:

Schweitzer – Connect and retrieve data procedure

Viewing uploaded saved events.



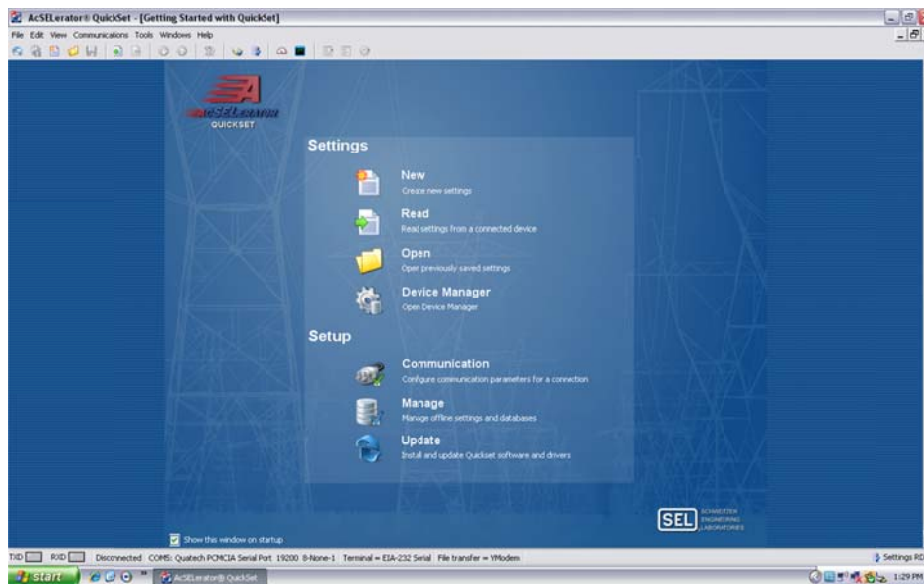
Select to view different analyses tools.



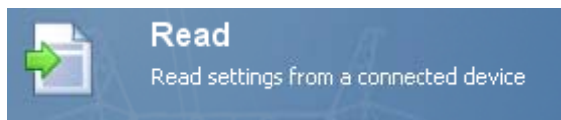
Select to close

To upload settings from the 351A

From the main menu



Select



When upload is complete save file in the settings window (Device and Date)

End of Procedure.